

Remote Power Reboot with Managed Connectivity

Cellular connectivity keeps you in control

Faster Response Without a Truck Roll

The Digi Ventus VRB842 puts instant remote power control in the hands of broadband aggregators, ISPs, and managed service providers to reduce downtime by restarting devices like modems and routers more quickly. Reboot with no truck roll, without a phone call, without delay.

Dual SIM, multi-carrier 4G management connectivity is built into service pricing, giving MSPs dedicated, always-available access. When the customer's network is down, you can respond and restore instantly.

Sell Better Uptime For New Recurring Revenue

For MSPs, the VRB842 opens a conversation that connectivity alone cannot. Remote reboot is a valuable service customers will appreciate and pay more for.

That kind of relevance not only generates revenue. It reduces customer churn.



Remote Power Reboot eliminates costly truck rolls and unnecessary support calls when a simple reboot is all that's needed.



For more information, visit:

ventus.digi.com

866-949-9994 | 203-642-2800

© 2026 Digi International Inc. All rights reserved.

Key Features

- ✔ **Network Tripwire Auto-Reboot:** Monitors up to five user-defined IP addresses or URLs. Automatically power-cycles the affected outlet when connectivity loss is detected.
- ✔ **Scheduled Power Reboot:** Set one-time, daily, weekly, or monthly power cycles for each outlet — proactively prevent device freeze without truck rolls.
- ✔ **Dual Controlled Outlets:** Independently control two outlets — reboot your modem on one outlet and router/firewall on the other, separately or together.
- ✔ **Use Any Type of Broadband:** Designed for Starlink, cable modems, DSL gateways, and any wired or wireless broadband CPE.
- ✔ **Cellular Included:** A dedicated cellular link provides remote access to the Genesis management platform.

**The cellular connection and data plan are for device management only, not customer data traffic.*



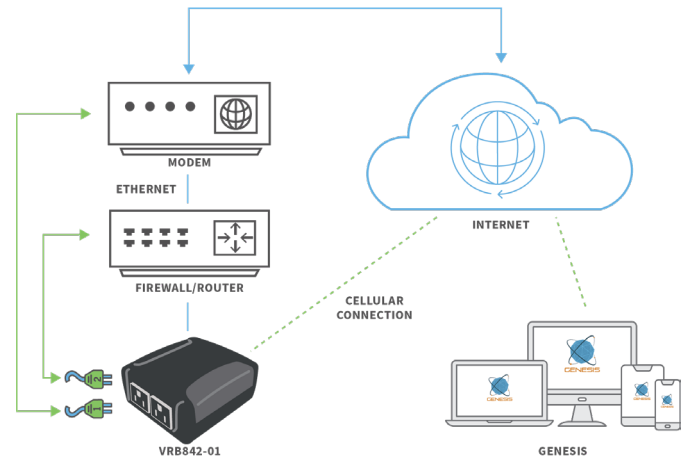
Why MSPs Care

- ✔ Creates a new revenue stream from an as-a-service model customers readily understand.
- ✔ Opens a fresh conversation about managed services at every existing account.
- ✔ Differentiates your offering with a value-added capability competitors may not provide.
- ✔ Drives stickiness: customers who rely on you for uptime are customers who stay.
- ✔ Reduces truck rolls and after-hours dispatch costs, improving your own margins.

Primary Use Case

- ✔ Providers managing large fleets of customer modems, satellite gateways, and edge routers face higher field-service costs and customer friction when devices lock up or need to be power cycled.
- ✔ Remote Power Reboot eliminates costly truck rolls by enabling fully remote power cycling via the Genesis monitoring platform, from any browser or mobile screen.

How it Works



Using the WAN interface the VRB can ping any IP on the internet or LAN network it is attached to.

What's Included With Every VRB842 Managed Connectivity-as-a-Service Subscription

- Cellular Data (management only)
- Genesis Monitoring Platform
- Tripwire & Scheduled Reboot
- Dual Outlet Control
- 24x7x365 Help Desk
- Lifetime Warranty

Download the [VRB842-02 datasheet](#)

For more information, visit:

ventus.digi.com

866-949-9994 | 203-642-2800

© 2026 Digi International Inc. All rights reserved.

DIGI **Ventus**
Managed Connectivity Solutions